


NJ Health
New Jersey Department of Health

CD
Communicable Disease

EPIDEMIOLOGY SURVEILLANCE REPORT Northeast Region



Lisa DiFedele
Regional Coordinator
South/Central East Region
NJDOH/CDS/REP

Please Note : This report is for use by Public Health Officials only and is not for public distribution.

All data are provisional and are subject to change.

Purpose/Objectives

Purpose

- To provide regional information and updates to public health partners on communicable disease activity and trends within their region

Objectives

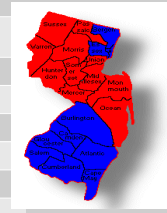
- Provide an overview of communicable disease activity.
- Describe quarterly trends in select communicable diseases
- Highlight interesting and/or notable outbreaks/clusters and/or investigations.

Select Disease Trends and Activity

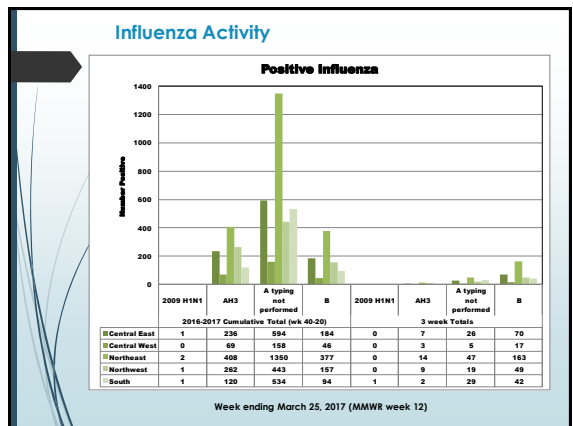
Influenza Activity

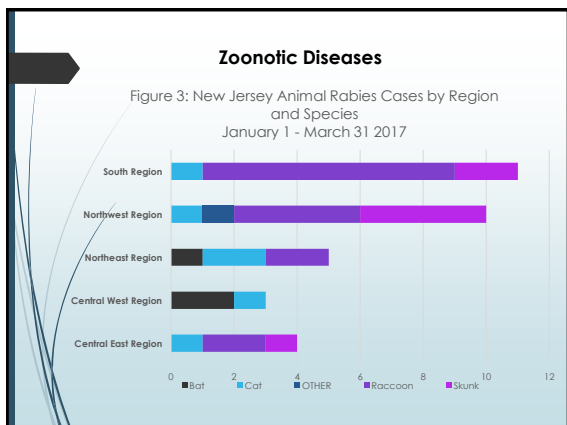
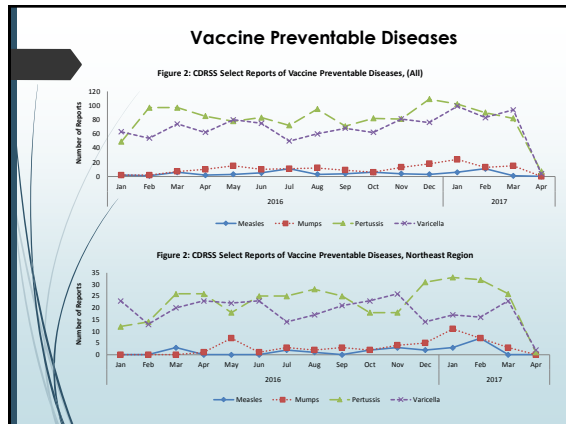
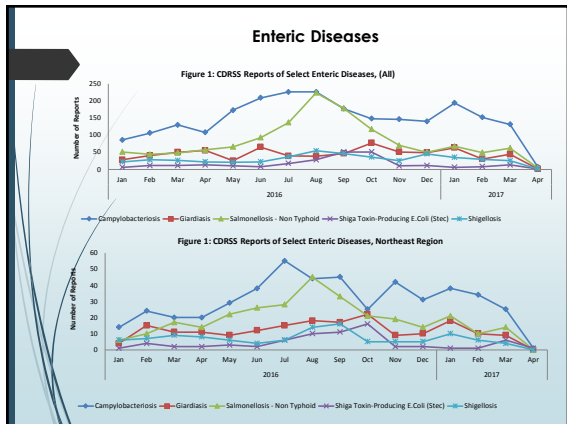
Influenza Activity Level

State Activity Week Ending 3/25:		HIGH
Current Week Last Year:		HIGH
Regional Data		
Northwest		HIGH
Northeast		MODERATE
Central West		HIGH
Central East		HIGH
South		MODERATE



High Influenza activity level in the State.
Moderate influenza activity level in the Northeast Region





10

OUTBREAK/CLUSTER REPORTING

